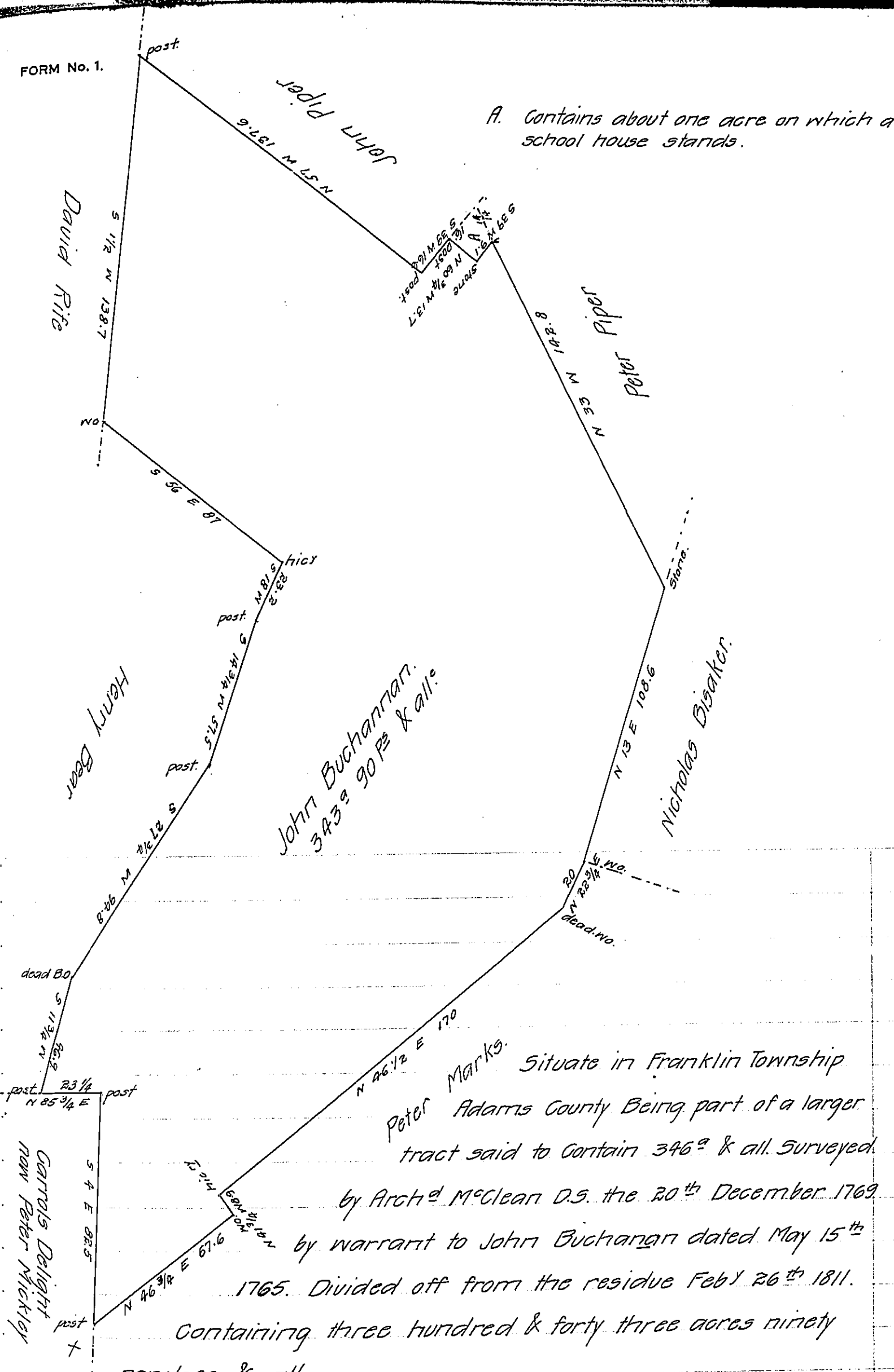


FORM No. 1.



A. Contains about one acre on which a school house stands.

John Buchanan  
343 a 90 p & all e

Peter Marks. Situate in Franklin Township  
Adams County Being part of a larger  
tract said to contain 346 a & all. Surveyed  
by Arch<sup>d</sup> McClean D.S. the 20<sup>th</sup> December 1769  
by warrant to John Buchanan dated May 15<sup>th</sup>  
1765. Divided off from the residue Feb<sup>y</sup> 26<sup>th</sup> 1811.

Containing three hundred & forty three acres ninety  
perches & all.

To Andrew Porter Esqr. By Sam<sup>l</sup> Sloan. D.S.  
Surveyor General.

IN TESTIMONY that the above is a copy of the original remaining on file in  
the Department of Internal Affairs of Pennsylvania, made  
conformably to an Act of Assembly approved the 16th day of  
February, 1833, I have hereunto set my Hand and caused  
the Seal of said Department to be affixed at Harrisburg,  
this twenty-seventh day of June 1910.

Henry Howell  
Secretary of Internal Affairs.